



US009786225B2

(12) **United States Patent**
Hyeon et al.

(10) **Patent No.:** **US 9,786,225 B2**
(45) **Date of Patent:** ***Oct. 10, 2017**

(54) **ORGANIC LIGHT EMITTING DIODE DISPLAY**

(58) **Field of Classification Search**

None
See application file for complete search history.

(71) Applicant: **Samsung Display Co., Ltd.**, Yongin, Gyeonggi-Do (KR)

(56) **References Cited**

U.S. PATENT DOCUMENTS

(72) Inventors: **Ju-Hee Hyeon**, Yongin (KR);
Hyun-Chol Bang, Yongin (KR)

6,771,028 B1 * 8/2004 Winters G09G 3/3233
315/169.1

(73) Assignee: **Samsung Display Co., Ltd.**, Samsung-ro, Giheung-Gu, Yongin-si, Gyeonggi-Do (KR)

6,781,321 B2 8/2004 Ko et al.
(Continued)

(*) Notice: Subject to any disclaimer, the term of this patent is extended or adjusted under 35 U.S.C. 154(b) by 26 days.
This patent is subject to a terminal disclaimer.

FOREIGN PATENT DOCUMENTS

KR 10-0573156 4/2006
KR 10-0688801 2/2007
KR 10-0911980 8/2009

(21) Appl. No.: **14/791,034**

Primary Examiner — Antonio Xavier

(22) Filed: **Jul. 2, 2015**

(74) *Attorney, Agent, or Firm* — Robert E. Bushnell, Esq.

(65) **Prior Publication Data**

US 2015/0310805 A1 Oct. 29, 2015

(57) **ABSTRACT**

Related U.S. Application Data

(63) Continuation of application No. 13/566,295, filed on Aug. 3, 2012, now Pat. No. 9,092,080.

An organic light emitting diode display with improved aperture ratio includes: a substrate; first and second pixels disposed in a first row of the substrate and third and fourth pixels disposed in a second row adjacent to the first row and respectively disposed in the same columns as the first and second pixels; a scan line and a previous scan line applying a scan signal and a previous scan signal, respectively, to the pixel units; a data line and a driving voltage line applying a data signal and a driving voltage, respectively, to the pixel units; and a common initialization voltage line disposed between the first and second pixels and between the third and fourth pixels, commonly connected to the pixel units, and applying an initialization voltage. One common initialization contact hole connected to all pixels units and one initialization voltage line connected to the common initialization contact hole are surrounded by the pixel units.

(30) **Foreign Application Priority Data**

Mar. 29, 2012 (KR) 10-2012-0032386

(51) **Int. Cl.**

G09G 3/32 (2016.01)

G09G 3/3258 (2016.01)

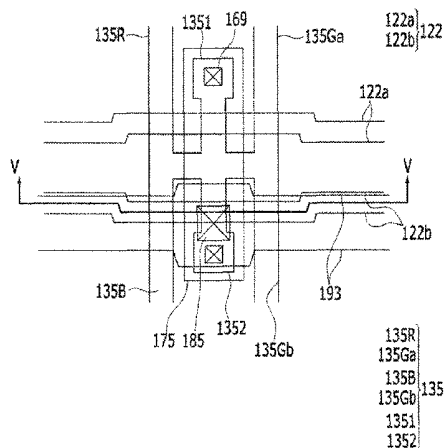
(Continued)

(52) **U.S. Cl.**

CPC **G09G 3/3258** (2013.01); **G06F 3/038** (2013.01); **G09G 3/32** (2013.01); **G09G 3/3233** (2013.01);

(Continued)

5 Claims, 4 Drawing Sheets



(51)	Int. Cl. G06F 3/038 (2013.01) G09G 3/3233 (2016.01)	2007/0108899 A1 5/2007 Jung et al. 2007/0236430 A1 10/2007 Fish 2008/0007492 A1 1/2008 Koh et al. 2008/0111777 A1 5/2008 Kim 2008/0315189 A1 12/2008 Lee et al. 2008/0316150 A1 12/2008 Lee et al. 2009/0243976 A1 10/2009 Choi 2010/0025664 A1* 2/2010 Park H01L 27/326 257/40 2010/0066232 A1 3/2010 Kim et al. 2010/0156762 A1 6/2010 Choi 2010/0220093 A1 9/2010 Choi 2011/0012816 A1 1/2011 Kang et al. 2011/0025659 A1* 2/2011 Kwak G09G 3/3233 345/205
(52)	U.S. Cl. CPC <i>G09G 2300/0426</i> (2013.01); <i>G09G 2300/0465</i> (2013.01); <i>G09G 2300/0819</i> (2013.01); <i>G09G 2300/0852</i> (2013.01); <i>G09G 2300/0861</i> (2013.01); <i>G09G 2320/0219</i> (2013.01)	
(56)	References Cited U.S. PATENT DOCUMENTS 7,675,492 B2 3/2010 Park et al. 7,692,191 B2 4/2010 Kwak et al. 8,018,408 B2 9/2011 Choi 8,772,789 B2 7/2014 Kubota et al. 2005/0057459 A1 3/2005 Miyazawa et al. 2005/0162092 A1 7/2005 Yamazaki et al. 2006/0170634 A1 8/2006 Kwak et al. 2006/0255726 A1 11/2006 Kim 2006/0267885 A1 11/2006 Kwak et al.	2011/0157144 A1 6/2011 Park et al. 2011/0227098 A1 9/2011 Choi 2011/0227889 A1 9/2011 Choi 2011/0285610 A1 11/2011 Yan et al. 2012/0013597 A1 1/2012 Han 2012/0026144 A1 2/2012 Kang et al. 2012/0105495 A1 5/2012 Choi 2012/0162177 A1 6/2012 Lee 2012/0175605 A1 7/2012 Shin et al.

* cited by examiner

FIG. 3

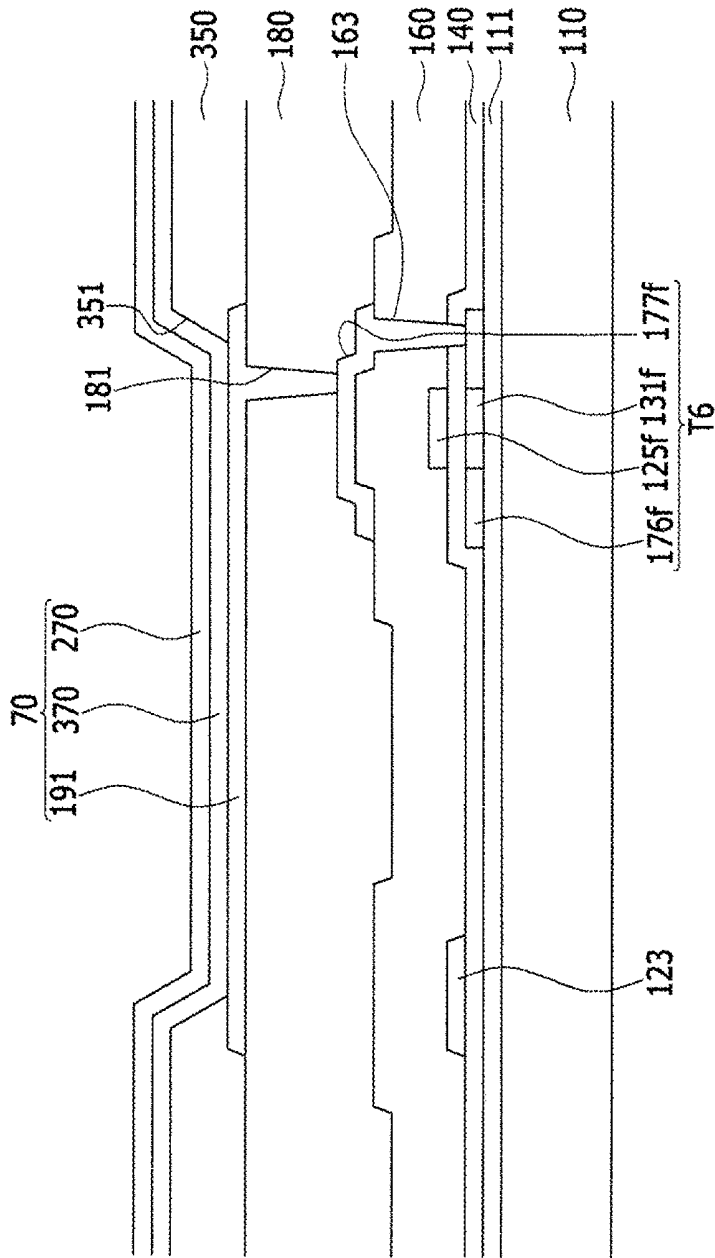


FIG. 4

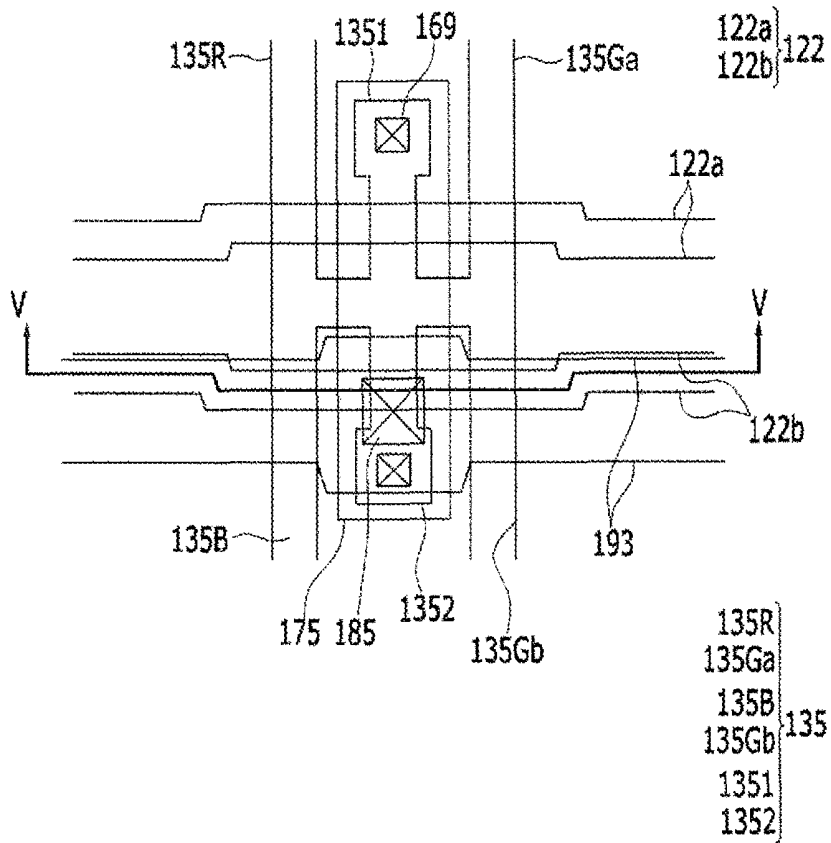
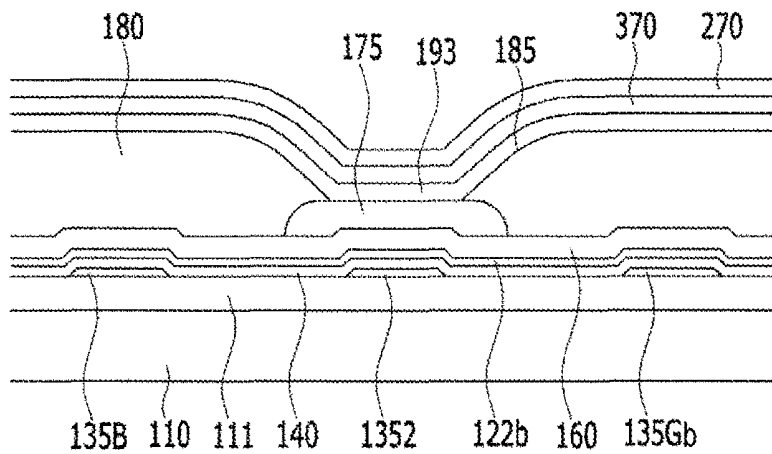


FIG. 5



ORGANIC LIGHT EMITTING DIODE DISPLAY

CLAIM OF PRIORITY

This application is a continuation of U.S. patent application Ser. No. 13/566,295, filed 3 Aug. 2012, which claims priority to and the benefit of Korean Patent Application No. 10-2012-0032386, filed on 29 Mar. 2012, with the Korean Intellectual Property Office, the entire contents of all of which are incorporated herein by reference.

BACKGROUND OF THE INVENTION

Field of the Invention

The present invention relates generally to an organic light emitting diode (OLED) display. More specifically, the invention relates to an OLED display which provides an improvement in aperture ratio while increasing storage capacitance.

Description of the Related Art

An organic light emitting diode (OLED) display includes two electrodes and an organic emission layer disposed between the two electrodes, and electrons injected from one electrode and holes injected from the other electrode are combined in the organic emission layer so that excitons are formed, and light is emitted by energy generated from the excitons.

In each pixel of the OLED display, a plurality of switching thin film transistors are formed to compensate for non-uniformity of a threshold voltage of driving thin film transistors and deterioration of an organic light emitting diode. In this case, an initialization voltage that initializes the driving thin film transistor is applied to the driving thin film transistor through an initialization voltage line.

Furthermore, in order to improve visibility of the OLED display, a green pixel having excellent visibility is further provided, and thus an OLED display of four color pixels has been applied, and the four color pixels can be arranged according to various types such as a stripe type, a checker type, or pentile type.

In particular, in the four color pixel OLED display, initialization voltage lines are respectively formed in two pixels in one row and in two pixels in an adjacent row, and in this case, each pixel should include an initialization contact hole for connection of the driving thin film transistor of each pixel with the initialization voltage line.

However, pixels of a high resolution OLED display tend to be down-sized, and accordingly a space for a storage capacitor is reduced due to an initialization contact hole formed in each pixel, and an aperture ratio is also decreased due to the initialization contact hole formed in each pixel.

The above information disclosed in this Background section is only for enhancement of an understanding of the background of the described technology, and therefore it may contain information that does not form the prior art that is already known in this country to a person of ordinary skill in the art.

SUMMARY OF THE INVENTION

The present invention has been developed in an effort to provide an organic light emitting diode (OLED) display that can improve an aperture ratio while increasing storage capacitance

An OLED display according to an exemplary embodiment may include: a substrate; pixel units including first and

second pixels disposed in a first row of the substrate, and third and fourth pixels disposed in a second row that is adjacent to the first row and respectively disposed in the same columns as the first and second pixels; a scan line and a previous scan line respectively applying a scan signal and a previous scan signal to the pixel units; a data line and a driving voltage line crossing the scan line and the previous scan line, and respectively applying a data signal and a driving voltage to the pixel units; and a common initialization voltage line disposed between the first and second pixels and between the third and fourth pixels, commonly connected to the pixel units, and applying an initialization voltage.

The OLED display may further include: a contact hole connection electrode formed in the same layer where the data line and driving voltage line are formed and surrounded by the pixel units; and a protective layer covering the data line, the driving voltage line, and the contact hole connection electrode. The common initialization voltage line may be formed on the protective layer, and the common initialization voltage line may be connected to the contact hole connection electrode of the protective layer through a common initialization contact hole surrounded by the pixel units.

The OLED display may further include: a contact hole connection semiconductor layer formed on the substrate and overlapping the contact hole connection electrode; a gate insulating layer formed on the contact hole connection semiconductor layer; and an interlayer insulating layer formed between the previous scan line which is formed on the gate insulating layer and the contact hole connection electrode.

The contact hole connection semiconductor layer may be connected to the contact hole connection electrode through an auxiliary contact hole formed in the interlayer insulating layer.

The contact hole connection semiconductor layer may be connected to initialization thin film transistors respectively formed in the first, second, third, and fourth pixels.

The scan line may include a first scan line applying a first scan signal to the first and second pixels and a second scan line applying a second scan signal to the third and fourth pixels, and the first scan line and the second scan line may be separated from each other with reference to the common initialization voltage line.

The previous scan line may include a first previous scan line applying a first previous scan signal to the first and second pixels and a second previous scan line applying a second previous scan signal to the third and fourth pixels, and the first previous scan line and the second previous scan line may be adjacent to each other.

The data voltage line may include a first data line applying a first data signal to the first and third pixels and a second data line applying a second data signal to the second and fourth pixels, and the first data line and the second data line may be symmetrical relative to each other with reference to the common initialization contact hole.

The driving voltage line may include a first driving voltage line applying a first driving voltage to the first and third pixels and a second driving voltage line applying a second driving voltage to the second and fourth pixels, and the first driving voltage line and the second driving voltage line may be symmetrical relative to each other with reference to the common initialization contact hole.

The first pixel and the second pixel may be symmetrical relative to the third and fourth pixels with reference to the common initialization voltage line.

The first and third pixels may be symmetrical relative to the second and fourth pixels with reference to the common initialization hole.

According to the present invention, one common initialization contact hole connected to all of the pixels units and one initialization voltage line connected to the common initialization contact hole are disposed in a location surrounded by the pixel units so that the initialization contact hole may not need to be formed in each pixel, thereby improving an aperture ratio.

In addition, the initialization contact hole may not need to be formed in each pixel, and accordingly a space for the storage capacitor can be assured.

Accordingly, the size of the pixel can be reduced, and thus the pixel is applicable to a high resolution OLED display.

BRIEF DESCRIPTION OF THE DRAWINGS

A more complete appreciation of the invention, and many of the attendant advantages thereof, will be readily apparent as the same becomes better understood by reference to the following detailed description when considered in conjunction with the accompanying drawings, in which like reference symbols indicate the same or similar components, wherein:

FIG. 1 is a pixel equivalent circuit diagram of an organic light emitting diode (OLED) according to an exemplary embodiment of the present invention.

FIG. 2 is a layout view of a pixel unit of the OLED display according to the exemplary embodiment of the present invention.

FIG. 3 is a cross-sectional view of the OLED display of FIG. 2, taken along the line III-III.

FIG. 4 is an enlarged layout view of a portion of a common initialization contact hole of the OLED display of FIG. 2.

FIG. 5 is a cross-sectional view of FIG. 2 and FIG. 4, taken along the line V-V.

DETAILED DESCRIPTION OF THE INVENTION

Hereinafter, the present invention will be described more fully with reference to the accompanying drawings, in which exemplary embodiments of the invention are shown. As those skilled in the art will realize, the described embodiments may be modified in various different ways, all without departing from the spirit or scope of the present invention.

The drawings and description are to be regarded as illustrative in nature and not restrictive. Like reference numerals designate like elements throughout the specification.

Furthermore, the size and thickness of the elements shown in the drawings are provided for better understanding and ease of description, and the present invention is not necessarily limited thereto.

In the drawings, the thickness of layers, films, panels, regions, etc. are exaggerated for clarity. Furthermore, the thickness of some layers and regions are exaggerated in the drawings for better understanding and ease of description. It will be understood that, when an element such as a layer, film, region, or substrate is referred to as being "on" another element, it can be directly on the other element or intervening elements may also be present.

An organic light emitting diode (OLED) display according to an exemplary embodiment of the invention will be described in further detail with reference to FIG. 1 thru FIG. 5.

FIG. 1 is an equivalent circuit diagram of one pixel of an OLED display according to an exemplary embodiment of the present invention.

As shown in FIG. 1, each pixel of the OLED display according to the exemplary embodiment includes a plurality of signal lines 121, 122, 123, 171, 172, and 193, a plurality of thin film transistors T1, T2, T3, T4, T5, and T6 respectively connected to the plurality of signal lines, capacitors Cst and Cb, and an organic light emitting diode OLED.

The thin film transistors include a driving thin film transistor T1, a switching thin film transistor T2, a compensation thin film transistor T3, an initialization thin film transistor T4, a first light emission control thin film transistor T5, and a second light emission control thin film transistor T6, and the capacitors Cst and Cb include a storage capacitor Cst and a boosting capacitor Cb.

The signal lines include a scan line 121 transmitting a scan signal Sn, a previous scan line 122 transmitting a previous scan signal Sn-1 to the initialization thin film transistor T4, a light emission control line 123 transmitting a light emission control signal En to the first light emission control thin film transistor T5 and the second light emission control thin film transistor T6, a data line 171 crossing the scan line 121 and transmitting a data signal Dm, a driving voltage line 172 transmitting a driving voltage ELVDD and formed substantially in parallel with the data line 171, and a common initialization voltage line 193 transmitting an initialization voltage Vint that initializes the driving thin film transistor T1.

A gate electrode of the switching thin film transistor T2 is connected to the scan line 121, a source electrode of the switching thin film transistor T2 is connected to the data line 171, a drain electrode of the switching thin film transistor T2 is electrically connected to a source electrode of the driving thin film transistor T1 and the driving voltage line 172. The switching thin film transistor T2 performs switching operation according to a scan signal transmitted through the scan line 121.

The driving thin film transistor T1 receives a data signal according to the switching operation of the switching thin film transistor T2 and supplies a driving current to the organic light emitting diode OLED.

A gate electrode of the driving thin film transistor T1 is connected to a first end of the storage capacitor Cst, and a second end of the storage capacitor Cst is connected to the driving voltage line 172. In addition, a gate electrode of the switching thin film transistor T2 is connected to a first end of the boosting capacitor Cb, and a second end of the boosting capacitor Cb is connected to a gate electrode of the driving thin film transistor T1.

A gate electrode of the driving thin film transistor T1 is electrically connected to an anode of the organic light emitting diode OLED. In addition, a cathode of the organic light emitting diode OLED is connected to a common voltage ELVSS. Thus, the organic light emitting diode OLED displays an image by emitting light with a driving current transmitted from the driving thin film transistor T1.

Hereinafter, an operational process of the pixel of the OLED display according to the exemplary embodiment will be described in further detail.

First, while the initialization thin film transistor T4 is in the turn-on state according to the previous scan signal Sn-1 transmitted through the previous scan line 122, the first end of the storage capacitor Cst and the gate electrode of the driving thin film transistor T1 are supplied with the initialization voltage Vint.

Next, the switching thin film transistor T2 and the compensation thin film transistor T3 are turned on according to the scan signal Sn transmitted through the scan line 121. While the switching thin film transistor T2 and the compensation thin film transistor T3 are in the turn-on state, the data signal Dm transmitted through the data line 171 is transmitted to the source electrode of the driving thin film transistor T1 and the driving thin film transistor T1 is diode-connected. Then, the gate electrode and the source electrode of the driving thin film transistor T1 are supplied with a voltage obtained by subtracting a threshold voltage of the driving thin film transistor T1 from the data voltage.

Next, the first light emission control thin film transistor T5 and the second light emission control thin film transistor T6 are turned on by the light emission control signal En transmitted through the light emission control line 123, and a voltage at the gate electrode of the driving thin film transistor T1 is boosted by an increase in the scan signal Sn transmitted through the scan line 121.

While the first light emission control thin film transistor T5 and the second light emission control thin film transistor T6 are in the turn-on state, the driving voltage ELVDD of the driving voltage line 172 is supplied to the source electrode of the driving thin film transistor T1 and a driving current according to a voltage difference between the gate electrode and the source electrode flows to the driving thin film transistor T1. The driving current is transmitted to the anode of the organic light emitting diode OLED through the turn-on second light emission control thin film transistor T6 so that the organic light emitting diode OLED emits light.

A pixel unit, wherein four of the pixels of the OLED display shown in FIG. 1 are provided, will now be described in further detail with reference to FIG. 2 thru FIG. 5.

FIG. 2 is a layout view of the OLED display according to the exemplary embodiment of the present invention, and FIG. 3 is a cross-sectional view of the OLED display of FIG. 2, taken along the line III-III.

As shown in FIG. 2 and FIG. 3, the OLED display according to the exemplary embodiment includes a substrate 110, pixel units R, Ga, B, and Gb formed of four color pixels and formed on the substrate 110, a scan line Scn and a previous scan signal Sn-1 formed along a row direction and respectively applying the scan signal Sn and the previous scan signal Sn-1 to the pixel units R, Ga, B, and Gb, a data line 171 and a driving voltage line 172 crossing the scan line 121 and the previous scan line 122 and respectively applying the data signal Dm and the driving voltage ELVDD, and a common initialization voltage line 193 disposed along a low direction between the pixel units R, Ga, B, and Gb and commonly applying the initialization voltage Vint to the pixel units R, Ga, B, and Gb.

The pixel units R, Ga, B, and Gb include a first pixel, a second pixel, a third pixel, and a fourth pixel. The first and second pixels are disposed in the first row and the third and fourth pixels are disposed in the second row which is adjacent to the first row. In the present exemplary embodiment, the first, second, third, and fourth pixels respectively correspond to a red pixel R, a first green pixel Ga, a blue pixel B, and a second green pixel Gb. Thus, hereinafter, it will be described that the pixel units R, Ga, B, and Gb include a red pixel R, a first green pixel Ga, a blue pixel B, and a second green pixel Gb.

The blue pixel B is disposed in the same column as the red pixel R and the second green pixel Gb is disposed in the same column as the first green pixel Ga. Therefore, the red

pixel R, the first green pixel Ga, the blue pixel B, and the second green pixel Gb form a checker-type pixel units R, Ga, B, and Gb.

The scan line 121 includes a first scan line 121a applying a first scan signal to the red pixel R and the first green pixel Ga, and a second scan line 121b applying a second scan signal to the blue pixel B and the second green pixel Gb. In addition, the previous scan line 122 includes a first previous scan line 122a applying a first previous scan signal to the red pixel R and the first green pixel Ga, and a second previous scan line 122b applying a second previous scan signal to the blue pixel B and the second green pixel Gb.

The first scan line 121a and the second scan line 121b are separated from each other by a constant gap with reference to the common initialization voltage line 193, and the first previous scan line 122a and the second previous scan line 122b are adjacent to each other.

The data line 171 includes a first data line 171a applying a first data signal to the red pixel R and the blue pixel B, and a second data line 171b applying a second data signal to the first green pixel Ga and the second green pixel Gb. In addition, the driving voltage line 172 includes a first driving voltage line 172a applying a first driving voltage to the red pixel R and the blue pixel B, and a second driving voltage line 172b applying a second driving voltage to the first green pixel Ga and the second green pixel Gb.

The first data line 171a and the second data line 171b are disposed symmetrically relative to each other with reference to a common initialization contact hole 185, and the first driving voltage line 172a and the second driving voltage line 172b are symmetrical relative to each other with reference to the common initialization contact hole 185.

The common initialization voltage line 193 is disposed between the red pixel R and the first green pixel Ga and between the blue pixel B and the second green pixel Gb, and is commonly connected to the initialization thin film transistors T4 of each of the pixel units R, Ga, B, and Gb.

Each of the red pixel R, the first green pixel Ga, blue pixel B, and the second green pixel Gb includes the driving thin film transistor T1, the switching thin film transistor T2, the compensation thin film transistor T3, the initialization thin film transistor T4, the first light emission control thin film transistor T5, the second light emission control thin film transistor T6, the storage capacitor Cst, the boosting capacitor Cb, and the organic light emitting diode 70.

The structures of the thin film transistors formed in the red pixel R and the blue pixel B will be described in detail, and the structures of the thin film transistors formed in the first green pixel Ga and the second green pixel Gb are substantially equivalent to the structures of the thin film transistors formed in the red pixel R and the blue pixel B.

The driving thin film transistor T1 includes a driving semiconductor layer 131a, a driving gate electrode 125a, a driving source electrode 176a, and a driving drain electrode 177a. The driving source electrode 176a corresponds to a driving source area of the driving semiconductor layer 131a, and the driving drain electrode 177a corresponds to a driving drain area of the driving semiconductor layer 131a.

The switching thin film transistor T2 includes a switching semiconductor layer 131b, a switching gate electrode 125b, a switching source electrode 176b, and a switching drain electrode 177b.

The compensation thin film transistor T3 includes a compensation semiconductor layer 131c, a compensation gate electrode 125c, a compensation source electrode 176c, and a compensation drain electrode 177c, and the initialization thin film transistor T4 includes an initialization semi-

conductor layer **131d**, an initialization gate electrode **125d**, an initialization source electrode **176d**, and an initialization drain electrode **177e**.

The first light emission control thin film transistor **T5** includes a first light emission control semiconductor layer **131e**, a first light emission control gate electrode **125e**, a first light emission control source electrode **176e**, and a first light emission control drain electrode **177e**, and the second light emission control thin film transistor **T6** includes a second light emission control semiconductor layer **131f**, a second light emission control gate electrode **125f**, a second light emission control source electrode **176f**, and a second light emission control drain electrode **177f**.

The storage capacitor **Cst** includes a first capacitor plate **132** and a second capacitor plate **127** with a gate insulating layer **140** interposed therebetween. Here, the interlayer insulating layer **140** becomes a dielectric material, and capacity is determined by the amount of charge charged in the storage capacitor **Cst** and a voltage between the two capacitor plates **132** and **127**.

The driving semiconductor layer **131** of the driving thin film transistor **T1** connects the switching semiconductor layer **131b** and the compensation semiconductor layer **131c** to each other, and connects the first light emission control semiconductor layer **131e** and the second light emission control semiconductor layer **131f** to each other.

Thus, the driving source electrode **176a** is connected to the switching drain electrode **177b** and the first light emission control drain electrode **177e**, and the driving drain electrode **177a** is connected to the compensation drain electrode **177c** and the second light emission control source electrode **176f**.

The first capacitor plate **132** of the storage capacitor **Cst** is connected to the compensation source electrode **176c** and the initialization drain electrode **177d**, and the second capacitor plate **128** is connected to the common voltage line **193** and is formed substantially in parallel with the scan line **121**.

The first capacitor plate **133** of the boosting capacitor **Cb** is connected to the driving gate electrode **125a** through a connection member **174**, and the second capacitor plate **129** is a portion protruding from the scan line **121**.

The switching thin film transistor **T2** is used as a switching element for selecting a pixel for light emission. The switching gate electrode **125b** is connected to the scan line **121**. The switching source electrode **176b** is connected to the data line **171**. The switching drain electrode **177b** is connected to the driving thin film transistor **T1** and the first light emission control thin film transistor **T5**.

The second light emission control drain electrode **177f** of the second light emission control thin film transistor **T6** is directly connected to a pixel electrode **191** of the organic light emitting diode **70** through a contact hole **181** of a protective layer **180**.

The red pixel **R** and the first green pixel **Ga** including the thin film transistors **T1**, **T2**, **T3**, **T4**, **T5**, and **T6** are symmetrical relative to the blue pixel **B** and the second green pixel **Gb** with reference to the common initialization voltage line **193**.

In addition, the red pixel **R** and the blue pixel **B** are symmetrical relative to the first green pixel **Ga** and the second green pixel **Gb** with reference to the common initialization contact hole **185**.

Hereinafter, the structure of the OLED display according to the exemplary embodiment will be described according to a layering sequence with reference to FIG. 3.

In particular, the structure of a thin film transistor will be described based on the second light emission control thin film transistor **T6**. In addition, the other thin film transistors **T1**, **T2**, **T3**, **T4**, and **T5** are almost the same in layering structure as the second light emission control thin film transistor **T6**, and therefore no further description of the thin film transistors **T1**, **T2**, **T3**, **T4**, and **T5** will be provided.

A buffer layer **111** is formed on the substrate **110**, and the second light emission control semiconductor layer **131f** is formed on the buffer layer **111**. The substrate **110** is formed of an insulating substrate made of glass, quartz, ceramic, plastic, or the like. The second light emission control semiconductor layer **131f** is formed of a polysilicon layer. In addition, the second light emission control semiconductor layer **131f** includes a channel area that is not doped with an impurity, and a source area and a drain area that are p+ doped at both sides of the channel area. Here, the impurity may be changed according to the type of thin film transistor.

A gate insulation layer **140** formed of silicon nitride (**SiNx**) or silicon oxide (**SiO₂**) is formed on the second light emission control semiconductor layer **131f**.

The scan line **121** including the switching gate electrode **125b** and the compensation gate electrode **125c**, the previous scan line **122** including the initialization gate electrode **125d**, the driving gate electrode **125a**, and the light emission control line **123** including the second light emission control gate electrode **125f** are formed on the gate insulating layer **140**. The second light emission control gate electrode **125f** is formed so as to overlap with at least a part, in particular, the channel area, of the second light emission control semiconductor layer **131f**. The gate wire further includes a second capacitor plate **127** forming a storage capacitor. The second capacitor plate **127** is connected to the driving voltage line **172** through the contact hole **168**.

An interlayer insulating layer **126** which covers the second light emission control gate electrode **125e** is formed on the gate insulating layer **140**. The gate insulating layer **140** and the interlayer insulating layer **160** include a contact hole **163** exposing a drain area of the second light emission control semiconductor layer **131f**. Like the gate insulating layer **140**, the interlayer insulating layer **160** is formed using a ceramic-based material such as silicon nitride (**SiNx**) or silicon oxide (**SiO₂**).

A data wire, including the data line **171** that includes the switching source electrode **176b**, the connection member **174**, the second light emission control drain electrode **177f**, and the driving voltage line **172**, is formed on the interlayer insulating layer **160**.

In addition, the switching source electrode **176b** and the second light emission control drain electrode **177f** are respectively connected to the source area of the switching semiconductor layer **131b** and the drain area of the second light emission control semiconductor layer **131f** through the contact holes **162** and **163**, respectively, formed in the interlayer insulating layer **160** and the gate insulating layer **140**.

The protective layer **180**, which covers the data wires **171**, **174**, **177f**, and **172**, is formed on interlayer insulating layer **160**, and the pixel electrode **191** is formed on the protective layer **180**. The pixel electrode **191** is connected to the second light emission control drain electrode **177f** through the contact hole **181** formed in the protective layer **180**.

A barrier rib **350** is formed on an edge of the pixel electrode **191** and the protective layer **180**, and the barrier rib **350** includes a barrier rib opening **351** that exposes the pixel electrode **191**. The barrier rib **350** may be formed of a

resin such as a polyacrylates resin and polyimides or a silica-based inorganic material.

An organic emission layer **370** is formed on the pixel electrode **191** exposed through the barrier rib opening **351**, and a common electrode **270** is formed on the organic emission layer **370**. Accordingly, the organic light emitting diode **70**, including the pixel electrode **191**, the organic emission layer **370**, and the common electrode **270**, is formed.

Here, the pixel electrode **191** is an anode which is a hole injection electrode, and the common electrode **270** is a cathode which is an electron injection electrode. However, the exemplary embodiment of the invention is not limited thereto, and the pixel electrode **191** may be a cathode and the common electrode **270** may be an anode according to the driving method of the OLED display. Holes and electrons are injected from the pixel electrode **191** and the common electrode **270** into the organic light emitting layer **370**, and when excitons, formed as the holes and electrons injected into the organic light emitting layer **370**, are combined and change from a base state to an excited state, the organic light emitting layer **370** emits light.

The organic emission layer **370** is formed of a low molecular organic material or a high molecular organic material such as Poly 3,4-ethylenedioxythiophene (PEDOT). In addition, the organic emission layer **370** may be formed of a multilayer including at least one of an emission layer, a hole injection layer (HIL), a hole transport layer (HTL), an electron transport layer (ETL), and an electron injection layer (EIL). When the organic emission layer **370** includes all the above-stated layers, the hole injection layer (HIL) is disposed on the first electrode **71** which is a hole injection electrode, and the hole transport layer (HTL), the emission layer, the electron transport layer (ETL), and the electron injection layer (EIL) are sequentially layered thereon. Since the common electrode **270** is formed of a reflective conductive material, the OLED display is formed as a bottom emission type OLED display. The reflective material may include lithium (Li), calcium (Ca), fluoride lithium/calcium (LiF/Ca), fluoride lithium/aluminum (LiF/Al), aluminum (Al), silver (Ag), magnesium (Mg), and gold (Au).

Hereinafter, the common initialization contact hole formed in a location surrounded by the pixel units will now be described in further detail.

FIG. 4 is an enlarged layout view of a portion of the common initialization contact hole of FIG. 2, and FIG. 5 is a cross-sectional view of FIG. 2 and FIG. 4, taken along the line V-V.

As shown in FIG. 4 and FIG. 5, the buffer layer **111** is formed on the substrate **110**, and a contact hole connection semiconductor layer **135** is formed on the buffer layer **111**. The contact hole connection semiconductor layer **135** includes four external connection branches **135R**, **135Ga**, **135B**, and **135Gb** and two internal connection branches **135I** and **1352**. The four external connection branches **135R**, **135Ga**, **135B**, and **135Gb** are respectively connected with the initialization semiconductor layer **131** of each of the pixel units R, Ga, B, and Gb.

The gate insulating layer **140** is formed on the contact hole connection semiconductor layer **135**, the previous scan line **122b** is formed on the gate insulating layer **140**, and interlayer insulating layer **160** is formed on previous scan line **122b**. A contact hole connection electrode **175** is formed on the interlayer insulating layer **160**. The contact hole connection electrode **175** is surrounded by the pixel units R, Ga, B, and Gb, and is formed in the same layer where the

data line **171** and the driving voltage line **172** are formed. The two internal connection branches of the contact hole connection semiconductor layer **135** are connected to the contact hole connection electrode **175** through an auxiliary contact hole **169** formed in the interlayer insulating layer **160**.

The protective layer **180** is formed on the contact hole connection electrode **175** and the interlayer insulating layer **160**, and the common initialization voltage line **193** is formed on the protective layer **180**. One common initialization contact hole **185** which exposes the contact hole connection electrode **175** is formed in the protective layer **180**. The common initialization contact hole **185** is formed in a location surrounded by the pixel units R, Ga, B, and Gb, and the common initialization voltage line **193** is connected to the contact hole connection electrode **175** through the common initialization contact hole **185**.

Thus, when the previous scan signal is transmitted through the previous scan line **122**, the initialization thin film transistor T4 of each of the pixel units R, Ga, B, and Gb connected to the previous scan line **122** is turned on. In this case, an initialization voltage transmitted through the common initialization voltage line **193** is transmitted to the contact hole connection electrode **175** through the common initialization contact hole **185**, and subsequently, the initialization voltage is transmitted to the contact hole connection semiconductor layer **135** through the auxiliary contact hole **169**. Thus, the initialization voltage is supplied to the gate electrode of the driving thin film transistor T1 of each of the pixel units through the four external connection branches **135R**, **135Ga**, **135B**, and **135Gb** so as to initialize the driving thin film transistor T1.

As described, one common initialization contact hole **185** connected to all of the pixel units R, Ga, B, and Gb and one common initialization voltage line **193** connected to the common initialization contact hole **185** are formed in a location surrounded by the pixel units R, Ga, B, and Gb so that an initialization contact hole may not need to be formed in each pixel, thereby improving the aperture ratio.

In addition, the initialization contact hole may not need to be formed in each pixel, and accordingly a space for the storage capacitor can be assured.

Accordingly, the size of the pixel can be reduced, and thus the pixel is applicable to a high resolution OLED display.

While this disclosure has been described in connection with what is presently considered to be practical exemplary embodiments, it is to be understood that the invention is not limited to the disclosed embodiments, but, on the contrary, is intended to cover various modifications and equivalent arrangements included within the spirit and scope of the appended claims.

What is claimed is:

1. An organic light emitting diode display device including a substrate and an array of pixel units disposed on the substrate, each pixel unit having first to fourth subpixels, the first and second subpixels being horizontally disposed in a first row and the third and fourth subpixels being horizontally disposed in a second row, each pixel unit comprising: a connection semiconductor layer layered on the substrate and being centrally disposed within the pixel unit, the connection semiconductor layer having first to fourth of branches extending to respective ones of the first to fourth subpixels, and having a fifth branch and a sixth branch;

11

- a contact hole connection electrode electrically connected to the fifth and sixth branches of the connection semiconductor layer via respective auxiliary contact holes; and
- a common initialization voltage line electrically connected to the contact hole connection electrode via a single common initialization contact hole, the common initialization voltage line providing an initialization voltage to any two subpixels of the first to fourth subpixels via respective ones of the first to fourth branches of the connection semiconductor layer, the common initialization voltage line extending in a row direction between the first row and the second row.
2. The organic light emitting diode display device as set forth in claim 1, further including:
- a first scan line applying a first scan signal to the first subpixel and the second subpixel, and a second scan line applying a second scan signal to the third subpixel and the fourth subpixel, the first and second scan lines extending in the row direction; and
- a first previous scan line applying a first previous scan signal to the first subpixel and the second subpixel, and a second previous scan line applying a second previous scan signal to the third subpixel and the fourth subpixel,

12

- the first and second previous scan lines extending in the row direction adjacent the common initialization voltage line.
3. The organic light emitting diode display device as set forth in claim 2, further including:
- a first data line and a first driving voltage line extending in a column direction on a left side of the pixel unit for applying a first data signal and a first driving voltage, respectively, to the first subpixel and the third subpixel; and
- a second data line and a second driving voltage line extending in a column direction on a right side of the pixel unit for applying a second data signal and a second driving voltage, respectively, to the second subpixel and the fourth subpixel.
4. The organic light emitting diode display device as set forth in claim 1, wherein the first subpixel is a blue subpixel, the second subpixel is a first green subpixel, the third subpixel is a red subpixel and the fourth subpixel is a second green subpixel.
5. The organic light emitting diode display device as set forth in claim 3, wherein the first subpixel is a blue subpixel, the second subpixel is a first green subpixel, the third subpixel is a red subpixel and the fourth subpixel is a second green subpixel.

* * * * *

专利名称(译)	有机发光二极管显示器		
公开(公告)号	US9786225	公开(公告)日	2017-10-10
申请号	US14/791034	申请日	2015-07-02
[标]申请(专利权)人(译)	三星显示有限公司		
申请(专利权)人(译)	三星DISPLAY CO. , LTD.		
当前申请(专利权)人(译)	三星DISPLAY CO. , LTD.		
[标]发明人	HYEON JU HEE BANG HYUN CHOL		
发明人	HYEON, JU-HEE BANG, HYUN-CHOL		
IPC分类号	G09G3/32 G09G3/3258 G06F3/038 G09G3/3233		
CPC分类号	G09G3/3258 G06F3/038 G09G3/32 G09G3/3233 G09G2320/0219 G09G2300/0465 G09G2300/0819 G09G2300/0852 G09G2300/0861 G09G2300/0426 H01L27/3216 H01L27/3276 H01L51/5203 H01L51/5246 H01L51/5253		
审查员(译)	XAVIER , ANTONIO		
优先权	1020120032386 2012-03-29 KR		
其他公开文献	US20150310805A1		
外部链接	Espacenet USPTO		

摘要(译)

具有改善的孔径比的有机发光二极管显示器包括：基板；第一和第二像素设置在基板的第一行中，第三和第四像素设置在与第一行相邻的第二行中，并且分别设置在与第一和第二像素相同的列中；扫描线和前一扫描线分别将扫描信号和前一扫描信号施加到像素单元；数据线和驱动电压线分别向像素单元施加数据信号和驱动电压；公共初始化电压线，设置在第一和第二像素之间以及第三和第四像素之间，共同连接到像素单元，并施加初始化电压。连接到所有像素单元的一个公共初始化接触孔和连接到公共初始化接触孔的一个初始化电压线被像素单元围绕。

